

Pendant luminaire - Silky matt MIRO-SILVER® micro-parabolic louvres - direct/indirect distribution - equipped for light run installation

Sheet steel housing, flat rectangular cross section, visible installation height 26 mm, end faces made of steel, prepared for light run installation; Housing colour silver grey/white aluminium RAL 9006; Direct/indirect light distribution using reflectivity-enhanced MIRO-SILVER® aluminium micro-parabolic louvre, silk-matt with low-section cross blades, for computer workstations, 65° < 1500 cd/m² omnidirectional glare reduction according to the current DIN EN 12464-1 standard, self-engaging; Wired ready for connection via 5-pin connection terminal with plug-in contacts. Light Control: netlife easy01S; Regiolux Classification: netlife easy; Control signal: DALI2 (Part 303, 304); Communication: Wired; Sensor technology: PIR - passive infrared; Installation height (min/max): 2m to 5m; Monitoring area: max. D=7m; App name: Osram BT Config; Osram BT Control; System compatibility: easy01; easy01C; flex10X; central DALI2 controller; DALI system power: 6mA; Application: Office, Meeting rooms, Corridors, Classrooms, Secondary rooms; Function: Motion detection, presence detection, Daylight control. Required accessories: Y-wire suspension for/without electrical connection must be ordered separately. The apps Osram BT Control, Osram BT Config for DALI LC01 are available in the App store/Google Play. Recommended minimum pendant length 0.5 m.

**CHARACTERISTICS**

|                               |  |
|-------------------------------|--|
| Order number                  | 60334028865  |
| EAN number                    | 4020863381791  |
| Commodity code                | 94051190   |
| Certification mark            | IP 20, Protection class I, VDU 65°<1000, F, Indoor, CE                 |
| Impact resistance (IK rating) | IK03   |
| Ambient temperatur            | ta 25°C  |
| Warranty period               | 5 years  |
| State funding programs        | BEG - Federal funding for efficient buildings (valid only for Germany) |

**ELECTRICAL ENGINEERING**

|                                      |  |
|--------------------------------------|--|
| Controller                           | Electronic driver DALI (1 pcs.)                            |
| Light Control                        | netlife easy01S  |
| System output                        | 50W  |
| Mains voltage                        | 230V/50Hz  |
| Circuit breakers (inrush current)    | 13 pieces/B10, 24 pieces/B16, 25 pieces/C10, 40 pieces/C16 |
| Energy efficiency class/light source | C  |

**LIGHTING TECHNOLOGY**

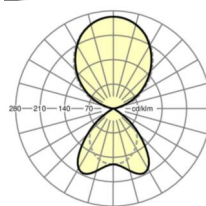
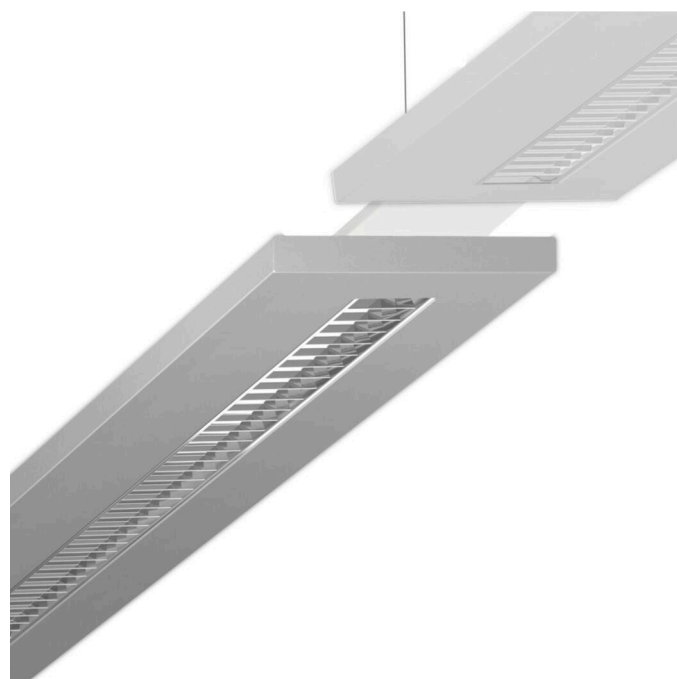
|                               |   |
|-------------------------------|---|
| Placement                     | LED, Colour rendering/Light colour CRI ≥ 80 / 4000K |
| Colour tolerance (MacAdam)    | 3SDCM   |
| Nominal luminous flux         | 6769lm  |
| LED service life              | 50000h L80/B10 (Tq 25°C)                            |
| Luminaire luminous efficiency | 134lm/W   |
| UGR lat./long.                | 13.3 / 12.6   |

**MECHANICS**

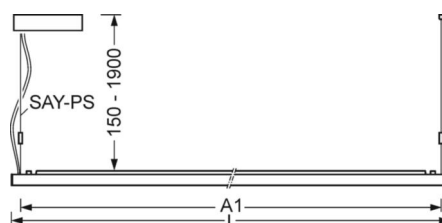
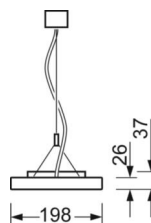
|                      |   |
|----------------------|---|
| Housing colour       | silver grey/white aluminium RAL 9006                      |
| Dimensions (LxWxDxH) | 1540mm x 198mm x 37mm                                     |
| Weight (net)         | 5.451kg   |
| Type of installation | Pendant individual mounting, Pendant light strip mounting |

**DEEP-LINK**

<https://www.regiolux.de/en/article/60334028865>



|                |                 |
|----------------|-----------------|
| Reference      | LED 6800lm 840  |
| ηLB            | 100 %           |
| Φ ↓/↑          | 36 % / 64 %     |
| UGR lat./long. | 13.3 / 12.6     |
| VDU            | 65° < 1000cd/m² |



## Dimensions

---

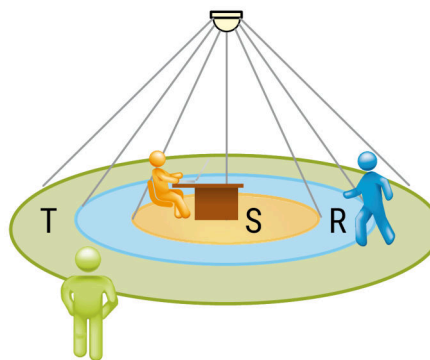
|              |         |   |
|--------------|---------|---|
| <b>L</b>     | 1540 mm | Length  |
| <b>B</b>     | 198 mm  | Width   |
| <b>H</b>     | 37 mm   | Height  |
| <b>A1</b>    | 1516 mm | Mounting distance single mounting                               |
| <b>A2</b>    | 1579 mm | Mounting distance 1st luminaire of the light run                |
| <b>A3</b>    | 1642 mm | Mounting distance between luminaires in a light run arrangement |
| <b>P min</b> | 150 mm  | Minimum suspension length                                       |
| <b>P max</b> | 1900 mm | Maximum suspension length                                       |

---

## LC SYSTEM

### CHARACTERISTICS

|                               |   |
|-------------------------------|---|
| Regiolux Classification       | netlife easy  |
| Control signal                | DALI2 (Part 303, 304)   |
| Communication                 | Wired   |
| Sensor technology             | PIR - passive infrared  |
| Installation height (min/max) | 2m to 5m  |
| App name                      | Osram BT Config; Osram BT Control                             |
| System compatibility          | easy01; easy01C; flex10X; central DALI2 controller            |
| DALI system power             | 6mA   |
| Application                   | Office, Meeting rooms, Corridors, Classrooms, Secondary rooms |
| Function                      | Motion detection, presence detection, Daylight control        |



### MONITORING AREA

|                      |      |      |    |
|----------------------|------|------|----|
| Mounting Height      | 2,5m | 3,5m | 5m |
| Ø max. sitting[S]    | 3,3m | 5m   | -  |
| Ø max. radial[R]     | 5,3m | 7m   | 7m |
| Ø max. tangential[T] | -    | -    | -  |

